

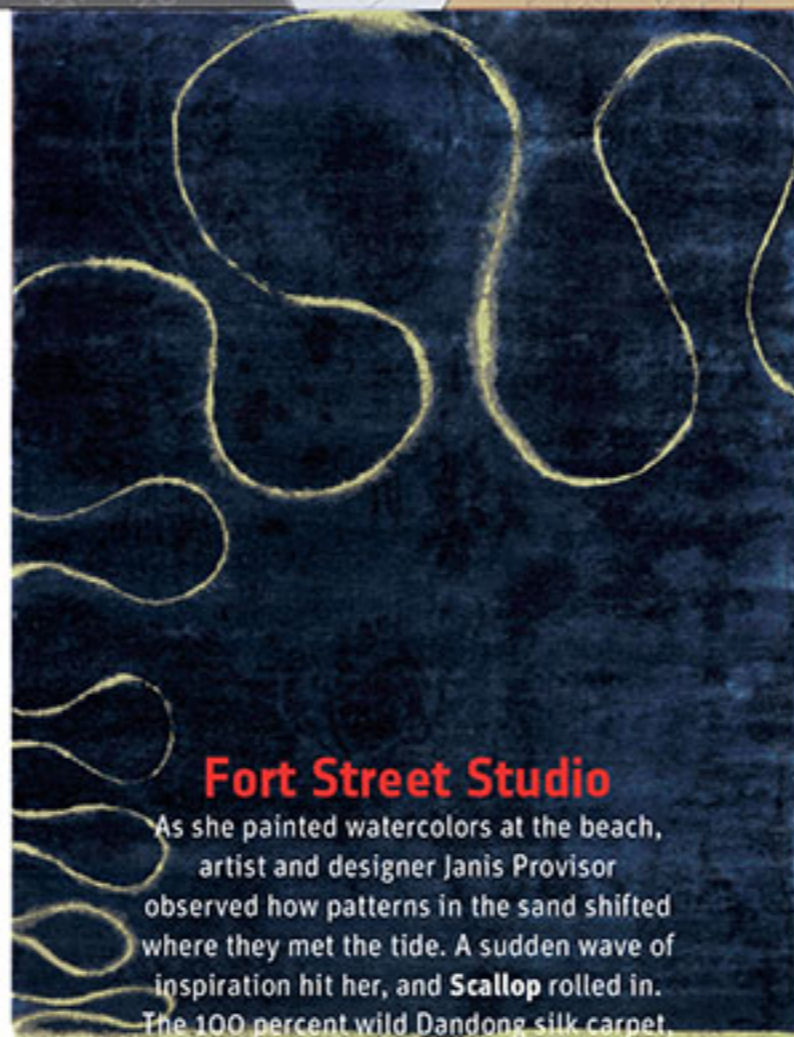
INTERIOR DESIGN[®]

MAY 31
2015



Villa Lagoon Tile

Flowers bloom wherever you choose with **Florentine** relief tiles. Two interlocking shapes—an 8 3/8-inch barbed quartrefoil and a complementary 11 3/8-inch "square"—combine to create fleurs-de-lis and similarly botanical reliefs in decorative-quality cement. A charming bouquet of six-dozen colors is ripe for the picking: a sandblasted finish is optional. villalagoontile.com. **circle 614**



Fort Street Studio

As she painted watercolors at the beach, artist and designer Janis Provisor observed how patterns in the sand shifted where they met the tide. A sudden wave of inspiration hit her, and **Scallop** rolled in. The 100 percent wild Dandong silk carpet, hand knotted in the Persian style, sets a bold chartreuse line against a navy ground, making a perfect setting for exploring your own creative impulses. fortstreetstudio.com. **circle 618**

Tandus Centiva

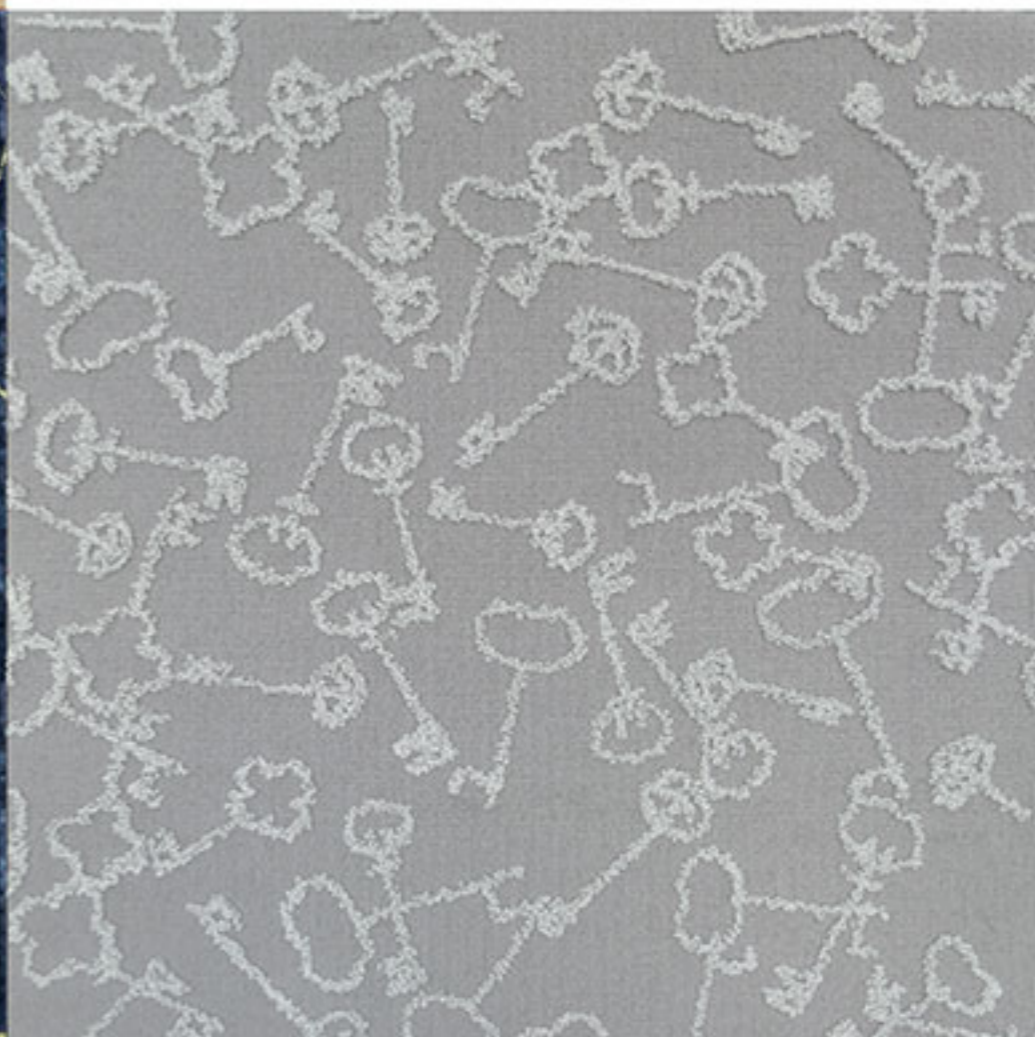
For a stylish workplace flooring option, look no further than **Cartography**. Available in 24-inch-square tiles, 6-foot Powerbond rolls, and multiple Freeform panel sizes, the Dynex SD Nylon carpeting boasts a textural surface of cut and uncut pile in 13 colorways: urban violet, waterline, minted, radioactive, and ancient parchment, to name a few. tandus-centiva.com. **circle 617**



flooring

Martin Patrick Evan

With this rug, one of four patterns in the new ShineLine collection, Edouard Daunas found the **Key**. Stylized, raised-loop-silk iterations tumble across the hand-tufted wool-loop background. Choose any custom color combination imaginable, including the neutral cream-on-gray version shown here. Bespoke sizes are also available. martinpatrickevan.com. **circle 615**



Topfloor

Different strokes for different folks: Esti Barnes takes the idea to heart. Her **Caress** collection features 22 textures in wool, mohair, merino wool, silk, viscose, and linen. Patterns like **Venezia** are offered in soft creamy tones and custom colors, too. Any size and shape can be manufactured in as few as five weeks. topfloorrugs.com. **circle 616**

Go to interiordesign.net for an archive of featured products.